

T 225 R 7E, M W

D-1 D-2	1	2	3	4	5	6	7	8	9	10	11	12	13	14	15	16	17	18	19	20	21	22	23	24	25
B	+	+	+	+	+	+	+	+	+	+	+	+	+	+	+	+	+	+	+	+	+	+	+	+	+
C	+	6	+	+	5	+	+	+	4	+	+	3	+	+	2	+	+	+	+	+	+	+	+	+	+
D	+	+	+	+	+	+	+	+	+	+	+	+	+	+	+	+	+	+	+	+	+	+	+	+	+
E	+	+	+	+	+	+	+	+	+	+	+	+	+	+	+	+	+	+	+	+	+	+	+	+	+
F	+	+	+	+	+	+	+	+	+	+	+	+	+	+	+	+	+	+	+	+	+	+	+	+	+
G	+	7	+	+	8	+	+	+	9	+	+	+	10	+	+	+	+	+	+	+	+	+	+	+	12
H	+	+	+	+	+	+	+	+	+	+	+	+	+	+	+	+	+	+	+	+	+	+	+	+	+
J	+	+	+	+	+	+	+	+	+	+	+	+	+	+	+	+	+	+	+	+	+	+	+	+	+
K	+	+	+	+	+	+	+	+	+	+	+	+	+	+	+	+	+	+	+	+	+	+	+	+	+
L	+	18	+	+	17	+	+	+	16	+	+	+	15	+	+	+	14	+	+	+	+	+	+	+	13
M	+	+	+	+	+	+	+	+	+	+	+	+	+	+	+	+	+	+	+	+	+	+	+	+	+
N	+	+	+	+	+	+	+	+	+	+	+	+	+	+	+	+	+	+	+	+	+	+	+	+	+
O	+	+	+	+	+	+	+	+	+	+	+	+	+	+	+	+	+	+	+	+	+	+	+	+	+
P	+	19	+	+	20	+	+	+	21	+	+	+	22	+	+	+	23	+	+	+	+	+	+	+	24
Q	+	+	+	+	+	+	+	+	+	+	+	+	+	+	+	+	+	+	+	+	+	+	+	+	+
R	+	+	+	+	+	+	+	+	+	+	+	+	+	+	+	+	+	+	+	+	+	+	+	+	+
S	+	+	+	+	+	+	+	+	+	+	+	+	+	+	+	+	+	+	+	+	+	+	+	+	+
T	+	30	+	+	29	+	+	+	28	+	+	+	27	+	+	+	26	+	+	+	+	+	+	+	25
U	+	+	+	+	+	+	+	+	+	+	+	+	+	+	+	+	+	+	+	+	+	+	+	+	+
V	+	+	+	+	+	+	+	+	+	+	+	+	+	+	+	+	+	+	+	+	+	+	+	+	+
W	+	+	+	+	+	+	+	+	+	+	+	+	+	+	+	+	+	+	+	+	+	+	+	+	+
X	+	31	+	+	32	+	+	+	33	+	+	+	34	+	+	+	35	+	+	+	+	+	+	+	36
Y	+	+	+	+	+	+	+	+	+	+	+	+	+	+	+	+	+	+	+	+	+	+	+	+	+
Z	+	+	+	+	+	+	+	+	+	+	+	+	+	+	+	+	+	+	+	+	+	+	+	+	+

**LEGEND**

○ = Corner having information on form 7100-52 in this file.

*LEGEND CONFORMS TO  
REPORTING FORM MPB  
2/80*

**FILING INSTRUCTION**

File 7100-52 card record by letter and number coordinates behind the file guide for the township in which it falls.

File the 7100-52 card record by letter and then by number i.e., all A cards first, then B cards etc.

The first card behind the file guide (if data have been obtained and recorded) will be card A-1 for N.W. Township Corner, then card A-2 for 1/16 corner then card A-3 for 1/4 corner etc.

Index File No. \_\_\_\_\_  
T 22S. R. 7E.  
Merid. Will

**CORNER RECORD (SEARCH)**

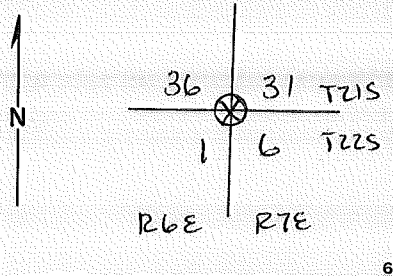
Tract or Survey No. \_\_\_\_\_  
Cor. No. A-1

R.D. Crescent County Deschutes  
N.F. Deschutes State Oregon

Sec Cor \_\_\_\_\_

**CORNER DIAGRAM**

**DESCRIBE CORNER MONUMENT FOUND**



SEE: T21S, R6E, Z-25

**DESCRIBE BEARING TREES OR OTHER OFFICIAL ACCESSORIES FOUND**

**PHOTO IDENTIFICATION DATA**

Photo No. \_\_\_\_\_  
Filed At. \_\_\_\_\_  
Object Ident. \_\_\_\_\_  
Ident. By \_\_\_\_\_  
*Signature*

*A BT '15 PD.*

**DESCRIBE CORNER LOCATION RELATIVE TO NEAR-BY FEATURES, ALSO HOW TO REACH CORNER**

**PLANE COORDINATE POSITION DATA**

State \_\_\_\_\_ Zone \_\_\_\_\_  
X \_\_\_\_\_  
Y \_\_\_\_\_  
Estab. By \_\_\_\_\_  
*Agency*

Signature \_\_\_\_\_

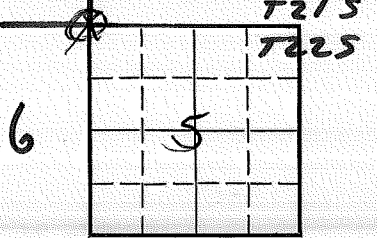
Title \_\_\_\_\_ Division \_\_\_\_\_ Headquarters \_\_\_\_\_ Date \_\_\_\_\_

LAND CORNER RECORD

A-05 5680-2

1. T 22S R 7E No. A-5 Cor. Sec. Mer. WILL State OREGON N. F. DESCHUTES Dist. CRESCENT

31 Corner Station 32



3. Original Description \_\_\_\_\_ Vol. \_\_\_\_\_ Page \_\_\_\_\_ Where Recorded \_\_\_\_\_

4. Description of Corners:

5. Investigation Notes:

SEE: Z-5, T21S, R7E, WM

Handwritten initials 'BLS' and 'PD'.

7. Photo Identification

Photo No. \_\_\_\_\_

Ident. By: \_\_\_\_\_

8. Plane Coordinate Position Data

State \_\_\_\_\_ Zone \_\_\_\_\_

X \_\_\_\_\_

Y \_\_\_\_\_

Estab. By \_\_\_\_\_

Field Book No. \_\_\_\_\_

Where Filed \_\_\_\_\_

9. Evaluation

Authentic \_\_\_\_\_

Needs Verif. \_\_\_\_\_ Monument \_\_\_\_\_

Re-estab. \_\_\_\_\_ Survey \_\_\_\_\_

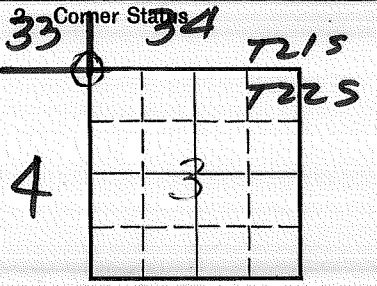
Land Status \_\_\_\_\_

6. Signed \_\_\_\_\_ Title \_\_\_\_\_ Date \_\_\_\_\_

LAND CORNER RECORD

4-13 5680-2

1. T. 22S R. 7E No. A-<sup>13</sup> Cor. Sec Mer. WIEL State OREGON N. F. DESCHUTES Dist. CRESCENT



3. Original Description \_\_\_\_\_ Vol. \_\_\_\_\_ Page \_\_\_\_\_ Where Recorded \_\_\_\_\_

4. Description of Corners:

5. Investigation Notes:

SEE: Z-<sup>13</sup>, T21S, R7E, WM

SF/NE

7. Photo Identification

Photo No. \_\_\_\_\_

Ident. By: \_\_\_\_\_

8. Plane Coordinate Position Data

State \_\_\_\_\_ Zone \_\_\_\_\_

X \_\_\_\_\_

Y \_\_\_\_\_

Estab. By \_\_\_\_\_

Field Book No. \_\_\_\_\_

Where Filed \_\_\_\_\_

9. Evaluation

Authentic \_\_\_\_\_

Needs Verif. \_\_\_\_\_ Monument \_\_\_\_\_

Re-estab. \_\_\_\_\_ Survey \_\_\_\_\_

Land Status \_\_\_\_\_

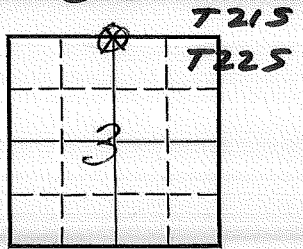
6. Signed \_\_\_\_\_ Title \_\_\_\_\_ Date \_\_\_\_\_

LAND CORNER RECORD

A-15 5680-2

1. T. 22S R. 7E No. A-15 Cor. 1/4 Mer. WILL State OREGON N. F. DESCHUTES Dist. CRESCENT

2. Corner Status 34



3. Original Description Vol. Page Where Recorded

4. Description of Corners:

5. Investigation Notes:

SEE: Z-15, T21S, R7E, WM

Handwritten signature: AT'S PD.

7. Photo Identification

Photo No. \_\_\_\_\_

Ident. By: \_\_\_\_\_

8. Plane Coordinate Position Data

State \_\_\_\_\_ Zone \_\_\_\_\_

X \_\_\_\_\_

Y \_\_\_\_\_

Estab. By \_\_\_\_\_

Field Book No. \_\_\_\_\_

Where Filed \_\_\_\_\_

9. Evaluation

Authentic \_\_\_\_\_

Needs Verif. \_\_\_\_\_ Monument \_\_\_\_\_

Re-estab. \_\_\_\_\_ Survey \_\_\_\_\_

Land Status \_\_\_\_\_

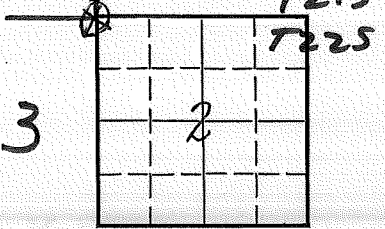
6. Signed \_\_\_\_\_ Title \_\_\_\_\_ Date \_\_\_\_\_

LAND CORNER RECORD

A-17 5680-2

1. T 22S R 7E No. A-17 Cor. SEC Mer. WILL State OREGON N. F. DESCHUTES Dist. CRESCENT

34 Corner Status 35 T21S



3. Original Description Vol. Page Where Recorded

4. Description of Corners:

5. Investigation Notes:

SEE: Z-17, T21S, R7E, WM

BT PD

7. Photo Identification

Photo No. \_\_\_\_\_

Ident. By: \_\_\_\_\_

8. Plane Coordinate Position Data

State \_\_\_\_\_ Zone \_\_\_\_\_

X \_\_\_\_\_

Y \_\_\_\_\_

Estab. By \_\_\_\_\_

Field Book No. \_\_\_\_\_

Where Filed \_\_\_\_\_

9. Evaluation

Authentic \_\_\_\_\_

Needs Verif. \_\_\_\_\_ Monument \_\_\_\_\_

Re-estab. \_\_\_\_\_ Survey \_\_\_\_\_

Land Status \_\_\_\_\_

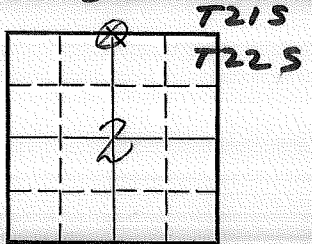
6. Signed \_\_\_\_\_ Title \_\_\_\_\_ Date \_\_\_\_\_

LAND CORNER RECORD

A-19 5680-2

1. T. 22S R. 7E No. A-19 Cor. 1/4 Mer. WILL State OREGON (Rectangular) N. F. DESCHUTES Dist. CRESCENT

2. Corner Station 95



3. Original Description \_\_\_\_\_ Vol. \_\_\_\_\_ Page \_\_\_\_\_ Where Recorded \_\_\_\_\_

4. Description of Corners: \_\_\_\_\_

5. Investigation Notes: \_\_\_\_\_

SEE: Z-19, T21S, R7E, WM

7. Photo Identification

Photo No. \_\_\_\_\_

Ident. By: \_\_\_\_\_

8. Plane Coordinate Position Data

State \_\_\_\_\_ Zone \_\_\_\_\_

X \_\_\_\_\_

Y \_\_\_\_\_

Estab. By \_\_\_\_\_

Field Book No. \_\_\_\_\_

Where Filed \_\_\_\_\_

9. Evaluation

Authentic \_\_\_\_\_

Needs Verif. \_\_\_\_\_ Monument \_\_\_\_\_

Re-estab. \_\_\_\_\_ Survey \_\_\_\_\_

Land Status \_\_\_\_\_

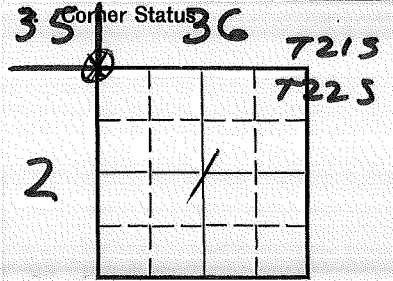
6. Signed \_\_\_\_\_ Title \_\_\_\_\_ Date \_\_\_\_\_

*Handwritten signature: BT P*

LAND CORNER RECORD

A-21 5680-2

1. T 22S R 7E No. SEC Cor. A-21 Mer. WILL State OREGON N. F. DESCHUTES Dist. CRESCENT



3. Original Description Vol. Page Where Recorded

4. Description of Corners:

5. Investigation Notes:

SEE: Z-21, T21S, R7E, WM

Handwritten scribbles, possibly initials or numbers.

7. Photo Identification

Photo No. \_\_\_\_\_

Ident. By: \_\_\_\_\_

8. Plane Coordinate Position Data

State \_\_\_\_\_ Zone \_\_\_\_\_

X \_\_\_\_\_

Y \_\_\_\_\_

Estab. By \_\_\_\_\_

Field Book No. \_\_\_\_\_

Where Filed \_\_\_\_\_

9. Evaluation

Authentic \_\_\_\_\_

Needs Verif. \_\_\_\_\_ Monument \_\_\_\_\_

Re-estab. \_\_\_\_\_ Survey \_\_\_\_\_

Land Status \_\_\_\_\_

6. Signed \_\_\_\_\_ Title \_\_\_\_\_ Date \_\_\_\_\_

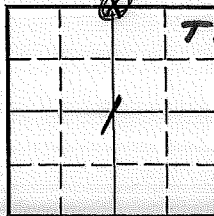


LAND CORNER RECORD

A-23 5680-2

1. T 22S R 7E No A-23 Cor. 1/4 Mer. WILL State OREGON (Rectangular) N. F. DESCHUTES Dist. CRESCENT

2. Corner Station 36



T21S  
T22S

3. Original Description \_\_\_\_\_ Vol. \_\_\_\_\_ Page \_\_\_\_\_ Where Recorded \_\_\_\_\_

4. Description of Corners:

5. Investigation Notes:

SEE: Z-23, T21S, R7E, WM

*Handwritten signature/initials*

7. Photo Identification

Photo No. \_\_\_\_\_

Ident. By: \_\_\_\_\_

8. Plane Coordinate Position Data

State \_\_\_\_\_ Zone \_\_\_\_\_

X \_\_\_\_\_

Y \_\_\_\_\_

Estab. By \_\_\_\_\_

Field Book No. \_\_\_\_\_

Where Filed \_\_\_\_\_

9. Evaluation

Authentic \_\_\_\_\_

Needs Verif. \_\_\_\_\_ Monument \_\_\_\_\_

Re-estab. \_\_\_\_\_ Survey \_\_\_\_\_

Land Status \_\_\_\_\_

6. Signed \_\_\_\_\_ Title \_\_\_\_\_ Date \_\_\_\_\_

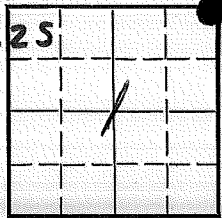
LAND CORNER RECORD

A-25 5680-2

1. T. 22S R. 7E No. A-25 Cor. Sec Mer. Wm State OREGON (Rectangular) N. F. DESCHUTES Dist. BEND

2. Corner Status 36 31

T215  
T225



3. Original Description \_\_\_\_\_ Vol. \_\_\_\_\_ Page \_\_\_\_\_ Where Recorded \_\_\_\_\_

4. Description of Corners: \_\_\_\_\_

5. Investigation Notes: \_\_\_\_\_

7. Photo Identification

Photo No. \_\_\_\_\_  
Ident. By: \_\_\_\_\_

8. Plane Coordinate Position Data

State \_\_\_\_\_ Zone \_\_\_\_\_  
X \_\_\_\_\_  
Y \_\_\_\_\_  
Estab. By \_\_\_\_\_  
Field Book No. \_\_\_\_\_  
Where Filed \_\_\_\_\_

9. Evaluation

Authentic \_\_\_\_\_  
Needs Verif. \_\_\_\_\_ Monument \_\_\_\_\_  
Re-estab. \_\_\_\_\_ Survey \_\_\_\_\_  
Land Status \_\_\_\_\_

~~See: 22S, T215, R7E, WM~~  
~~2-1 T215 R8E~~  
See A-01 2218  
BCSB

6. Signed \_\_\_\_\_ Title \_\_\_\_\_ Date \_\_\_\_\_

USDA-FOREST SERVICE

Index  
File No. 2153

CORNER RECORD (SEARCH)

(Ref. FSM 7.151.4)

Tract or  
Survey No. \_\_\_\_\_

Cor.  
No. C-21

T. 22 S. R. 7

E. R.D. Crescent

County Klamath

COR. of SEC.

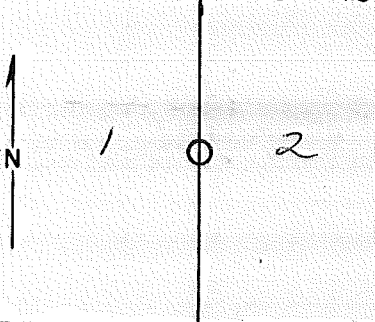
Merid. WILLAMETTE

N.F. DESCHUTES

State OREGON

COR. of SEC.

CORNER DIAGRAM PER LEGEND



DESCRIBE CORNER MONUMENT FOUND

*Yellow location poster 4X4*

*4' above ground*

*Rusty and overgrown*

*marked "225" Nail between 1 + 2 on S-6" LP.*

DESCRIBE BEARING TREES OR OTHER OFFICIAL ACCESSORIES FOUND

PHOTO IDENTIFICATION DATA

Photo No. \_\_\_\_\_

Filed At. \_\_\_\_\_

Object Ident. \_\_\_\_\_

Ident. By \_\_\_\_\_

*Signature*

DESCRIBE CORNER LOCATION RELATIVE TO NEAR-BY FEATURES, ALSO HOW TO REACH CORNER

Corner Legend:

Searched for/Not Found

Evidence Found/Accept.

Permanent Monument

Signature

*G. Hunt*

Title

Division

Headquarters

Date

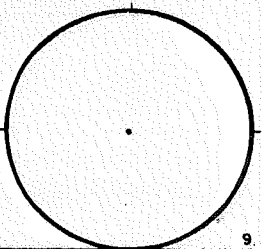
*7/29/81*

D-7100-52 (3/79)

CORNER RECORD (PERPETUATION)

MONUMENT. DESCRIBE NEW MONUMENT SET, OR WORK DONE TO PRESERVE EXISTING MONUMENT

MONUMENT STAMPED



ACCESSORIES. DESCRIBE NEW B<sup>Y</sup>'s WITNESS OBJECTS ETC. ESTABLISHED, OR WORK DONE TO PRESERVE EXISTING EVIDENCE

Work Done By \_\_\_\_\_ Title \_\_\_\_\_ Date \_\_\_\_\_ State Registration No. or Agency \_\_\_\_\_  
Certified Cor. Record Prepared? Yes No Filed At: **Co. SURVEYOR'S OFFICE** Date \_\_\_\_\_

REMARKS

Index File No. T. S., R. E., W. M. Tract or Surv. No. Cor.

Index File No. 2159 CORNER RECORD (SEARCH) Contract or Survey No. J-21  
 (Ref. FSM 7151.4)  
 T 22 S. R. 7 E. R.D. Crescent County Deschutes NW Cor. of  
 Merid. Willamette N.F. Deschutes State Oregon Section 13

CORNER DIAGRAM per legend

DESCRIBE CORNER MONUMENT FOUND

SE/NE

DESCRIBE BEARING TREES OR OTHER OFFICIAL ACCESSORIES FOUND

Tree Stump 18" dia, high stumped, some scribbles still visible, Metal tag on stump MARKED w/dates "34" & "57", MARKED stump; rocks in approx. cor location & blazed line trees w/red paint.

DESCRIBE CORNER LOCATION RELATIVE TO NEAR-BY FEATURES, ALSO HOW TO REACH CORNER

PHOTO IDENTIFICATION DATA

Photo No. \_\_\_\_\_  
 Filed At. \_\_\_\_\_  
 Object Ident. \_\_\_\_\_  
 Ident. By \_\_\_\_\_  
 Signature \_\_\_\_\_

CORNER LEGEND:

- FS or Unverified
- Contr. Other
- Searched For/Not Found
- ◇ Searched For/Not Found
- ⊗ Evidence Found/Accept.
- ⊗ Evidence Found/Accept.
- Permanent Mon. Set/Fd.
- ◆ Permanent Mon. Set/Fd.

Searched By:

LEON Mork

Title

FOR

Division

Headquarters

0-2

Date

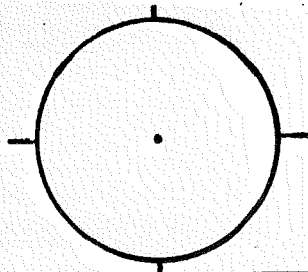
6/22/83

CORNER RECORD (PERPETUATION)

MONUMENT : DESCRIBE NEW MONUMENT SET, OR WORK DONE TO PRESERVE EXISTING MONUMENT

Four horizontal lines for describing the monument.

MONUMENT STAMPED



ACCESSORIES : DESCRIBE NEW BT'S WITNESS OBJECTS ETC. ESTABLISHED, OR WORK DONE TO PRESERVE EXISTING EVIDENCE

Four horizontal lines for describing accessories.

Work Done By \_\_\_\_\_ Title \_\_\_\_\_ Date \_\_\_\_\_ State Registration No. or Agency \_\_\_\_\_

Plat or Certified Cor. Record Prepared? Yes No Filed At \_\_\_\_\_ Co. Surveyor's Office Date \_\_\_\_\_

History of Surveys, G.L.O., etc. \_\_\_\_\_

Index File No. T. S., R. E., W.M. Contract or Surv. No. Cor. \_\_\_\_\_

2159

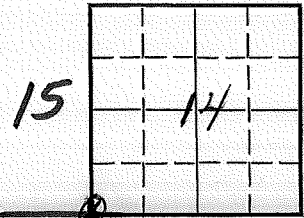
J-21

LAND CORNER RECORD

N-17 5680-2

1. T. 22S R. 7E No. N-17 Cor. SEC Mer. WILL State <sup>(Rectangular)</sup> OREGON N. F. DESCHUTES Dist. CRESCENT

2. Corner Status



7. Photo Identification

Photo No. \_\_\_\_\_  
Ident. By: \_\_\_\_\_

8. Plane Coordinate Position Data

State \_\_\_\_\_ Zone \_\_\_\_\_  
X \_\_\_\_\_  
Y \_\_\_\_\_  
Estab. By \_\_\_\_\_  
Field Book No. \_\_\_\_\_  
Where Filed \_\_\_\_\_

9. Evaluation

Authentic \_\_\_\_\_  
Needs Verif. \_\_\_\_\_ Monument \_\_\_\_\_  
Re-estab. \_\_\_\_\_ Survey \_\_\_\_\_  
Land Status \_\_\_\_\_

3. Original Description \_\_\_\_\_ Vol. \_\_\_\_\_ Page \_\_\_\_\_ Where Recorded \_\_\_\_\_

4. Description of Corners:

5. Investigation Notes: Section Corner common to sections 15, 14, 22 and 23. 2" x 2" wood post 3½ feet above ground. Original post on ground.

Bearing Trees:  
LP~~PP~~ - 12" dia., in Sec. 14  
PP - Snag in Sec. 23  
LP - 10" dia., in sec. 15  
Lp - 13" dia., in Sec 22

6. Signed \_\_\_\_\_ Title \_\_\_\_\_ Date \_\_\_\_\_

Index File No. 2163

CORNER RECORD (SEARCH)

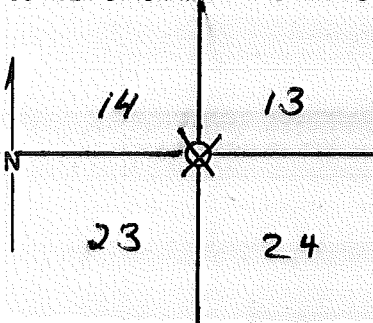
(Ref. FSM 7.151.4)

Tract or Survey No. \_\_\_\_\_ Cor. No. N-21

T. 22 S. R. 7 E. R.D. CRESCENT County DESCHUTES SE Cor. of SEC. 14

Merid. WILLAMETTE N.F. DESCHUTES State OREGON Cor. of SEC. \_\_\_\_\_

CORNER DIAGRAM PER LEGEND



DESCRIBE CORNER MONUMENT FOUND  
SF/NF

DESCRIBE BEARING TREES OR OTHER OFFICIAL ACCESSORIES FOUND  
2 BTs, ONE OF WHICH HAS BEEN CUT AND IS NOW MARKED WITH A BT TAG AND ORANGE RIBBON. THE OTHER BT IS A SNAG WHICH IS APPROX 11 FT. IN HEIGHT, 40" DBH.

PHOTO IDENTIFICATION DATA

Photo No. \_\_\_\_\_  
Filed At. \_\_\_\_\_  
Object Ident. \_\_\_\_\_  
Ident. By \_\_\_\_\_  
*Signature* \_\_\_\_\_

DESCRIBE CORNER LOCATION RELATIVE TO NEAR-BY FEATURES, ALSO HOW TO REACH CORNER

Corner Legend:

- Searched for/Not Found
- Evidence Found/Accept.
- Permanent Monument

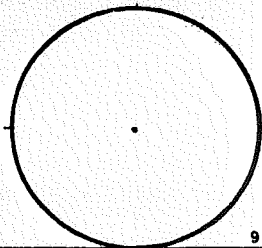
Signature DOTY & McDANIEL Title FOR. TECH Division \_\_\_\_\_ Headquarters D-2 Date 9-77 O-7100-52 (3/79)



CORNER RECORD (PERPETUATION)

MONUMENT. DESCRIBE NEW MONUMENT SET, OR WORK DONE TO PRESERVE EXISTING MONUMENT

MONUMENT STAMPED



9

ACCESSORIES DESCRIBE NEW BT'S WITNESS OBJECTS ETC. ESTABLISHED, OR WORK DONE TO PRESERVE EXISTING EVIDENCE

10

Work Done By \_\_\_\_\_ Title \_\_\_\_\_ Date \_\_\_\_\_ State Registration No. \_\_\_\_\_  
 or Agency \_\_\_\_\_  
 Certified Cor. Record Prepared? Yes No Filed At: **Co. SURVEYOR'S OFFICE** Date \_\_\_\_\_

11

REMARKS

12

Index File No. **2163** T. S., R. E., W.M. Tract or Surv. No. Cor. **N-21**

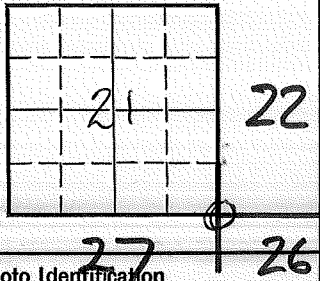
13

LAND CORNER RECORD

R-13 5680-2

1. T. 22S R. 7E No. R-13 Cor. SEC Mer. WILL State <sup>(Rectangular)</sup> OREGON N. F. DESCHUTES Dist. CRESCENT

2. Corner Status



7. Photo Identification  
 Photo No. \_\_\_\_\_  
 Ident. By: \_\_\_\_\_

8. Plane Coordinate Position Data  
 State \_\_\_\_\_ Zone \_\_\_\_\_  
 X \_\_\_\_\_  
 Y \_\_\_\_\_  
 Estab. By \_\_\_\_\_  
 Field Book No. \_\_\_\_\_  
 Where Filed \_\_\_\_\_

9. Evaluation  
 Authentic \_\_\_\_\_  
 Needs Verif. \_\_\_\_\_ Monument \_\_\_\_\_  
 Re-estab. \_\_\_\_\_ Survey \_\_\_\_\_  
 Land Status \_\_\_\_\_

3. Original Description \_\_\_\_\_ Vol. \_\_\_\_\_ Page \_\_\_\_\_ Where Recorded \_\_\_\_\_

4. Description of Corners: Established 1882 by Surveyor General  
 Set a Post for Sec. Cor. 21, 22, 27 & 28  
 A pine 14" dia. bears N 27° E 46 lks.  
 A pine 10" dia. bears S 71° E, 92 lks.  
 A pine 8" dia., bears S 18° W, 15 lks. A pine 7" dia., bears

5. Investigation Notes: N 63° W, 31 lks.  
 I drove up the Moore Cr. trail to section bd. 22 & 27 then chained west from found cor 22, 23, 26 & 27 1 mile to area of corner. Could find no evidence of corner. Old blaze line running E-W.

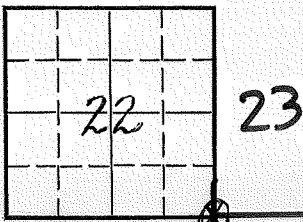
6. Signed J. Spangler Title Surv. Tech Date 10-31-63

LAND CORNER RECORD

R-17 5680-2

1. T 22S R 7E No R-17 Cor. SEC Mer. WILL State OREGON (Rectangular) N. F. DESCHUTES Dist. CRESCENT

2. Corner Status



3. Original Description \_\_\_\_\_ Vol. \_\_\_\_\_ Page \_\_\_\_\_ Where Recorded \_\_\_\_\_

4. Description of Corners: Set Post for corner from which:

- A pine 15" dia., bears N 30°E, 10 lks
- A pine 15" dia., bears S ~~N~~ 35° E, 17 lks
- A pine 14" dia., bears S 40°W, 62 lks
- A pine 12" dia., bears N 50°W, 25 lks.

5. Investigation Notes:

At the corner location I found a pile of lava rock about 1 ft. high. I also found all BT's ~~in sections 23 & 26~~ except the one in section 22. The BT's in sections 23 & 26 have blown down and are rotting rapidly.

7. Photo Identification

Photo No. \_\_\_\_\_  
Ident. By: \_\_\_\_\_

8. Plane Coordinate Position Data

State \_\_\_\_\_ Zone \_\_\_\_\_

X \_\_\_\_\_

Y \_\_\_\_\_

Estab. By \_\_\_\_\_

Field Book No. \_\_\_\_\_

Where Filed \_\_\_\_\_

9. Evaluation

Authentic \_\_\_\_\_

Needs Verif. \_\_\_\_\_ Monument \_\_\_\_\_

Re-estab. \_\_\_\_\_ Survey \_\_\_\_\_

Land Status \_\_\_\_\_

6. Signed R. Hawkins Title C.E. Tech Date 10-30-63

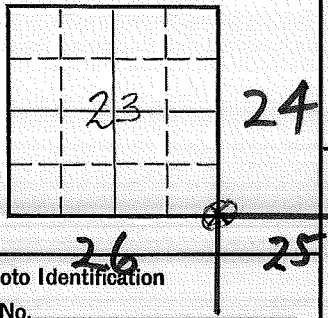
Revisited: 5/81 - FOUND 17" BT. (L.A.) WITH SCRIBE, YELLOW FS. POSTER DATED 8-2-57 BY SIPE

LAND CORNER RECORD

R-21 5680-2

1. T. 22S R. 7E No. R-21 Cor. SEC Mer. WILL State OREGON (Rectangular) N. F. DESCHUTES Dist. CRESCENT

2. Corner Status



7. Photo Identification

Photo No. \_\_\_\_\_  
Ident. By: \_\_\_\_\_

8. Plane Coordinate Position Data

State \_\_\_\_\_ Zone \_\_\_\_\_  
X \_\_\_\_\_  
Y \_\_\_\_\_  
Estab. By \_\_\_\_\_  
Field Book No. \_\_\_\_\_  
Where Filed \_\_\_\_\_

9. Evaluation

Authentic \_\_\_\_\_  
Needs Verif. \_\_\_\_\_ Monument \_\_\_\_\_  
Re-estab. \_\_\_\_\_ Survey \_\_\_\_\_  
Land Status \_\_\_\_\_

3. Original Description \_\_\_\_\_ Vol. \_\_\_\_\_ Page \_\_\_\_\_ Where Recorded \_\_\_\_\_

4. Description of Corners:

5. Investigation Notes: Section corner common to sections 23, 24, 26 & 25.  
3" X 3" wood stake 3' above ground. Not original stake.

Bearing Trees:  
PP - 32" dia., in section 23  
PP - in section 24  
PP - 14" dia., in section 25  
PP - 34" dia., in section 26

REVISITED: 5/81 - FOUND POSSIBLE BLAZE  
SEC. BOARDS

6. Signed Wm. Robinson Title Forester Date 3-21-62

USDA-FOREST SERVICE

Index

File No. \_\_\_\_\_

CORNER RECORD (SEARCH)

(Ref. FSM 7151.4)

Tract or

Survey No. \_\_\_\_\_

Cor.

No. R-23

T 22 S. R. 7 E.

R.D. CRESCENT

County KLAMATH

SW COR. SEC. 24

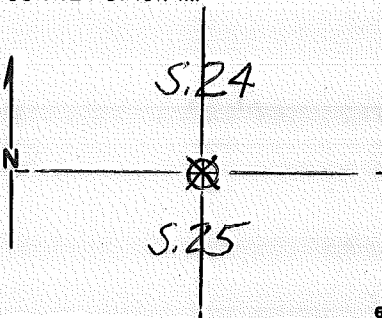
Merid. WILLAMETTE

N.F. DESCHUTES

State OREGON

N/A COR. SEC. 25

CORNER DIAGRAM



DESCRIBE CORNER MONUMENT FOUND

WOODEN STAKE 2" Ø ASG. 3' ABOVE GROUND

DESCRIBE BEARING TREES OR OTHER OFFICIAL ACCESSORIES FOUND

30" P. PINE BRG. NW  
30" P. PINE " SE  
30" P. PINE " SW

PHOTO IDENTIFICATION DATA

Photo No. \_\_\_\_\_

Filed At. \_\_\_\_\_

Object Ident. \_\_\_\_\_

Ident. By \_\_\_\_\_

*Signature*

PLANE COORDINATE POSITION DATA

State \_\_\_\_\_ Zone \_\_\_\_\_

X \_\_\_\_\_

Y \_\_\_\_\_

Estab. By \_\_\_\_\_

*Agency*

DESCRIBE CORNER LOCATION RELATIVE TO NEAR-BY FEATURES, ALSO HOW TO REACH CORNER

Signature  
VAN SICKLE / DOTY

Title

Division

Headquarters

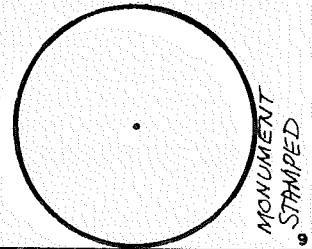
Date

7/75

D-7100-52 (10/78)

CORNER RECORD (PERPETUATION)

MONUMENT: DESCRIBE NEW MONUMENT SET, OR WORK DONE TO PRESERVE EXISTING MONUMENT



ACCESSORIES: DESCRIBE NEW BT'S WITNESS OBJECTS ETC. ESTABLISHED, OR WORK DONE TO PRESERVE EXISTING EVIDENCE

Work Done By \_\_\_\_\_ Title \_\_\_\_\_ Date \_\_\_\_\_ State Registration No. or Agency \_\_\_\_\_  
Certified Cor. Record Prepared? Yes No Filed At: \_\_\_\_\_ Date \_\_\_\_\_

REMARKS

Index File No. T. S., R. E., W. M. Tract or Surv. No. Cor. **R-23**

10  
11

12  
13

Index  
File No. \_\_\_\_\_

**CORNER RECORD (SEARCH)**

(Ref. FSM 7151.4)

Tract or  
Survey No. \_\_\_\_\_

Cor.  
No. V-13

T 22S R. 7E

R.D. Crescent County Deschutes

SEC. Co.R.

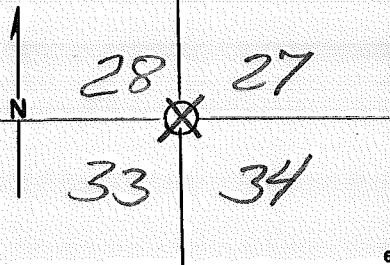
Merid. Will

N.F. Deschutes State Oregon

\_\_\_\_\_

**CORNER DIAGRAM**

**DESCRIBE CORNER MONUMENT FOUND**



Found a Rock 12"x10"x9"  
0" above the ground in Fair Condition  
Painted Red & Blue.

**DESCRIBE BEARING TREES OR OTHER OFFICIAL ACCESSORIES FOUND**

2 BT's a Pond. Pine about 24" DBH & 26" DBH one has a Tag on the Tree in Poor Condition. Rock mark with Paint as corner is in a pile of Lava Rock & Piles are all around.

**PHOTO IDENTIFICATION DATA**

Photo No. \_\_\_\_\_  
Filed At. \_\_\_\_\_  
Object Ident. \_\_\_\_\_  
Ident. By \_\_\_\_\_  
*Signature*

**DESCRIBE CORNER LOCATION RELATIVE TO NEAR-BY FEATURES, ALSO HOW TO REACH CORNER**

**PLANE COORDINATE POSITION DATA**

State \_\_\_\_\_ Zone \_\_\_\_\_  
X \_\_\_\_\_  
Y \_\_\_\_\_  
Estab. By \_\_\_\_\_  
*Agency*

Signature

J. Lawson

Title

Forester

Division

Headquarters

Date

8/12/75

7100-52-(3/68)

CORNER RECORD (PERPETUATION)

MONUMENT : DESCRIBE NEW MONUMENT SET, OR WORK DONE TO PRESERVE EXISTING MONUMENT

9

ACCESSORIES : DESCRIBE NEW BT's WITNESS OBJECTS ETC. ESTABLISHED, OR WORK DONE TO PRESERVE EXISTING EVIDENCE

10

Work Done By \_\_\_\_\_ Title \_\_\_\_\_ Date \_\_\_\_\_ State Registration No. or Agency \_\_\_\_\_

Certified Cor. Record Prepared ? Yes No Filed At: \_\_\_\_\_ Date \_\_\_\_\_

11

REMARKS

12

Index File No. T. R. M. Tract or Surv. No. Cor. U.S. G.P.O. 1977-25-576/586

V-133



USDA-FOREST SERVICE

Index  
File No. 1771

CORNER RECORD (SEARCH)

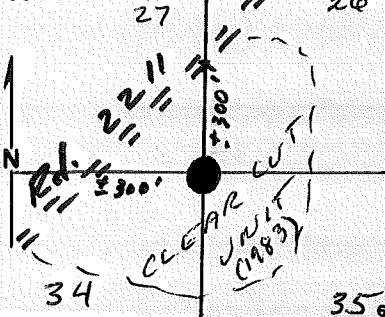
(Ref. FSM 7151.4)

Tract or Survey No. BLM 1000 Cor. No. V-17

T 22 S. R. 7 E. R.D. Crescent County Klamath Sec. Cor.

Merid. WILLAMETTE N.F. DESCHUTES State OREGON

CORNER DIAGRAM



DESCRIBE CORNER MONUMENT FOUND  
*Found No EVIDENCE of original Corner Post*

DESCRIBE BEARING TREES OR OTHER OFFICIAL ACCESSORIES FOUND  
*Found Dead and Down 26" Ponderosa PINE marked T22S R7E S34 the BT was Not visible. The rest of the Bts are gone.*

PHOTO IDENTIFICATION DATA  
Photo No. \_\_\_\_\_  
Filed At. \_\_\_\_\_  
Object Ident. \_\_\_\_\_  
Ident. By \_\_\_\_\_  
*Signature* \_\_\_\_\_

DESCRIBE CORNER LOCATION RELATIVE TO NEAR-BY FEATURES, ALSO HOW TO REACH CORNER

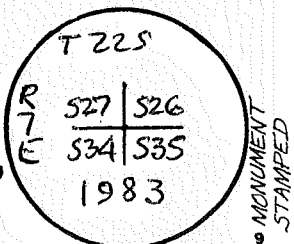
PLANE COORDINATE POSITION DATA  
State \_\_\_\_\_ Zone \_\_\_\_\_  
X \_\_\_\_\_  
Y \_\_\_\_\_  
Estab. By \_\_\_\_\_  
*Agency* \_\_\_\_\_

Signature R Hildebrand Title PLS. Division \_\_\_\_\_ Headquarters Bend Date 6/8/78 D-7100-52 (10/78)

**CORNER RECORD (PERPETUATION)**

**MONUMENT: DESCRIBE NEW MONUMENT SET, OR WORK DONE TO PRESERVE EXISTING MONUMENT**

~~I set a 1/2" x 1/2" x 1/8" Hub in the proper corner location determined by pulling the called dist and bearing from the existing BT. ~~N 26° E 137 3/4 ft. SET 2 1/2" x 30" BCSP RSG. 2", ON FLAT GROUND.~~~~



~~There are no marks on the Hub.~~

**ACCESSORIES: DESCRIBE NEW BT'S WITNESS OBJECTS ETC. ESTABLISHED, OR WORK DONE TO PRESERVE EXISTING EVIDENCE**

~~an 11" L.P. PINE bears S 47° 30' W 23 7/8 ft. This is an R.P. with a 60d nail.  
 3" P. PINE N 49° 0' E 88 LKS. TO 60d NL. IN NW BASE, MKD. X BT. the SW BASE.  
 7" P. PINE S 07 1/2° E 16 1/2 LKS. " " " " E " , " T225 R7E S35 BT  
 a 9" L.P. PINE bears S 13° E 18 2/3 ft This is an RP with a 60d nail.  
 7 1/4" P. PINE S 82 1/2° W 73 LKS. TO 60d NL. IN N. BASE, MKD. T225 R7E S34 BT  
 3" P. PINE N 47 3/4° W 162 LKS. " " " " NE " " X BT. the west BASE.~~

Work Done By: R. OMANIA Title: P.L.S. PLS Date: 6/10/82 State Registration No. 1898 OR-702  
 or Agency: \_\_\_\_\_

Certified Cor. Record Prepared?  (Yes)  (No) Filed At: BLM OFFICE Date: \_\_\_\_\_

~~This was done as part of a <sup>REMARKS</sup> 1/2" to a road survey and to perpetuate the corner so the B.L.M. or somebody can reestablish it at a later date.~~

- ORIG. 1 POST 4" SQ., 24" IN GRD., MKD. FOR COR.  
 BT'S: 14" PINE N 23° E 120 LKS  
 20" " 81° 0' E 26 LKS.  
 22" " S 26° W 208 LKS.  
 14" " N 15° W 30 LKS.

USDA-FOREST SERVICE

Index File No. 1771

CORNER RECORD (SEARCH)

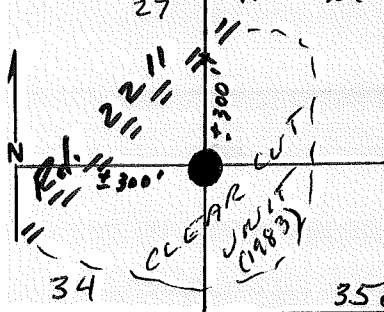
(Ref. FSM 7151.4)

Tract or Survey No. BLM 1000 Cor. No. V-17

T 22 S. R. 7 E. R.D. Crescent County Klamath Sec. Cor.

Merid. WILLAMETTE N.F. DESCHUTES State OREGON

CORNER DIAGRAM



DESCRIBE CORNER MONUMENT FOUND

Found No EVIDENCE of original Corner Post

DESCRIBE BEARING TREES OR OTHER OFFICIAL ACCESSORIES FOUND

Found Dead and Down 26" Ponderosa PINE marked T22S R7E S34 the BT was Not visible. The rest of the Bts are gone.

PHOTO IDENTIFICATION DATA

Photo No. \_\_\_\_\_  
Filed At. \_\_\_\_\_  
Object Ident. \_\_\_\_\_  
Ident. By \_\_\_\_\_  
Signature \_\_\_\_\_

DESCRIBE CORNER LOCATION RELATIVE TO NEAR-BY FEATURES, ALSO HOW TO REACH CORNER

PLANE COORDINATE POSITION DATA

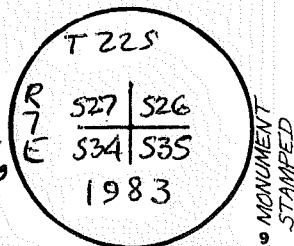
State \_\_\_\_\_ Zone \_\_\_\_\_  
X \_\_\_\_\_  
Y \_\_\_\_\_  
Estab. By \_\_\_\_\_  
Agency \_\_\_\_\_

Signature R. Hildebrand Title PLS. Division \_\_\_\_\_ Headquarters Bend Date 6/87 D-7100-52 (10/76)

CORNER RECORD (PERPETUATION)

MONUMENT: DESCRIBE NEW MONUMENT SET, OR WORK DONE TO PRESERVE EXISTING MONUMENT

~~I set a 1/2" x 2" x 18" Hub in the proper corner location determined by pulling the called dist and bearing from the existing BT. ~~N 26° E 139 3/4 ft. SET 2 1/2" x 30" DC SP RSG. 2"~~ ON FLAT GROUND.~~



~~There are no marks on the Hub.~~

ACCESSORIES: DESCRIBE NEW BT'S WITNESS OBJECTS ETC. ESTABLISHED, OR WORK DONE TO PRESERVE EXISTING EVIDENCE

~~AN 11" L.P. PINE bears S 47° 30' W 23 75 ft. This is an R.P. with a 60d nail. 3" P. PINE N 49° E 88 LKS. TO 60d NL. IN NW BASE, MKD. X BT. the SW BASE.~~

~~7" P. PINE S 07 1/2° E 161 3/4 LKS. " " " " E " , " T22S R7E S35 BT~~

~~a 9" L.P. PINE bears S 13° E 18 26 ft this is an RP with a 60d nail in 7" P. PINE S 82 1/2° W 73 LKS. TO 60d NL. IN N. BASE, MKD. T22S R7E S34 BT~~

~~3" P. PINE N 47 3/4° W 162 3/4 LKS. " " " " NE " " X BT. the west Base.~~

Work Done By: R. OMAN Title: P.L.S. PLS Date to: 10/82 State Registration No. 1898 or Agency: OK-702

Certified Cor. Record Prepared?  (Yes)  (No) Filed At: BLM OFFICE Date: \_\_\_\_\_

REMARKS  
~~This was done as part of a tie to a road survey and to perpetuate the corner so the B.L.M. or somebody can reestablish it at a later date. ORIG. POST 4" SQ., 24" IN GRD., MKD. FOR COR.~~

- BT'S: 14" PINE N 23° E 120 LKS
- 20" " S 10° E 26 LKS.
- 22" " S 26° W 208 LKS.
- 14" " N 15° W 30 LKS.

USDA-FOREST SERVICE

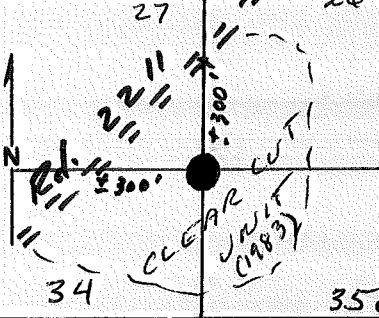
Index  
File No. 1771

CORNER RECORD (SEARCH)  
(Ref. FSM 7151.4)

Tract or Survey No. BLM 1000 Cor. No. V-17

T 22 S. R. 7 E. R.D. Crescent County Klamath Sec. Cor.   
Merid. WILLAMETTE N.F. DESCHUTES State OREGON

CORNER DIAGRAM



DESCRIBE CORNER MONUMENT FOUND

*Found NO EVIDENCE of original Corner Post*

DESCRIBE BEARING TREES OR OTHER OFFICIAL ACCESSORIES FOUND

*Found Dead and Down 26" Ponderosa PINE marked T225 R7E S34 the BT was NOT visible. The rest of the Bts are gone.*

PHOTO IDENTIFICATION DATA

Photo No. \_\_\_\_\_  
Filed At. \_\_\_\_\_  
Object Ident. \_\_\_\_\_  
Ident. By \_\_\_\_\_  
*Signature*

DESCRIBE CORNER LOCATION RELATIVE TO NEAR-BY FEATURES, ALSO HOW TO REACH CORNER

PLANE COORDINATE POSITION DATA

State \_\_\_\_\_ Zone \_\_\_\_\_  
X \_\_\_\_\_  
Y \_\_\_\_\_  
Estab. By \_\_\_\_\_  
*Agency*

Signature R H. Debrand Title PLS. Division \_\_\_\_\_ Headquarters Bend Date 6/87 D-7100-52 (10/78)

USDA-FOREST SERVICE

Index

File No. 1771

CORNER RECORD (SEARCH)

(Ref. FSM 7151.4)

Tract or

BLM

Survey No. 1000

Cpr.

No. V-17

T 22 S. R. 7 E.

R.D. Crescent

County Klamath

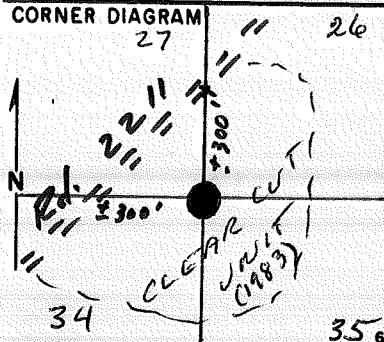
Sec. Cor. \_\_\_\_\_

Merid. WILLAMETTE

N.F. DESCHUTES

State OREGON

CORNER DIAGRAM



DESCRIBE CORNER MONUMENT FOUND

Found No Evidence of Original Corner Post

DESCRIBE BEARING TREES OR OTHER OFFICIAL ACCESSORIES FOUND

Found Dead and Down 26" Ponderosa Pine marked T225 R7E S34 the BT was Not Visible. The rest of the Bts are gone.

PHOTO IDENTIFICATION DATA

Photo No. \_\_\_\_\_

Filed At. \_\_\_\_\_

Object Ident. \_\_\_\_\_

Ident. By \_\_\_\_\_

Signature

7

PLANE COORDINATE POSITION DATA

State \_\_\_\_\_ Zone \_\_\_\_\_

X \_\_\_\_\_

Y \_\_\_\_\_

Estab. By \_\_\_\_\_

Agency

8

DESCRIBE CORNER LOCATION RELATIVE TO NEAR-BY FEATURES, ALSO HOW TO REACH CORNER

Signature R. Hildebrand

Title PLS.

Division \_\_\_\_\_

Headquarters Bend

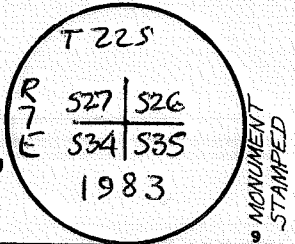
Date 6/81 D-7100-52 (10/78)

5

**CORNER RECORD (PERPETUATION)**

**MONUMENT: DESCRIBE NEW MONUMENT SET, OR WORK DONE TO PRESERVE EXISTING MONUMENT**

~~I set a 1/2" x 1" x 18" Hub in the proper corner location determined by pulling the called dist and bearing from the existing BT.  $\angle 26^\circ \square 137^3$  ft. SET 2 1/2" x 30" BCSP RSG. 2", ON FLAT GROUND.~~



~~There are no marks on the Hub.~~

**ACCESSORIES: DESCRIBE NEW BT'S WITNESS OBJECTS ETC. ESTABLISHED, OR WORK DONE TO PRESERVE EXISTING EVIDENCE**

~~an 11" L.P. PINE bears S 47° 30' W 23<sup>75</sup> ft. This is an R.P. with a 60d nail in 3" P. PINE N 49° E 88 LKS. TO 60d NL. IN NW BASE, MKD. X BT. THE SW BASE.~~

~~7" P. PINE S 07 1/2° E 16 1/2 LKS, " " " " E " , " T22SR7E S35 BT~~

~~a 9" L.P. PINE bears S 13° E 18<sup>26</sup> ft this is an RP with a 60d nail in 7" P. PINE S 82 1/2° W 73 LKS. TO 60d NL. IN N. BASE, MKD. T22SR7E S34 BT~~

~~3" P. PINE N 47 3/4° W 16 2/2 LKS. " " " " NE " " X BT. the west BASE.~~

Work Done By R. OMAN Title P.L.S. PLS Date to 10/82 State Registration No. 1098 or Agency OK-702

Certified Cor. Record Prepared?  (Yes)  (No) Filed At: BLM OFFICE Date: 11

~~This was done as part of a <sup>1.0</sup> to a road survey and to perpetuate the corner so the B.L.M. or somebody can reestablish it at a later date. ORIG. : post 4" SQ, 24" IN GRD., MKD. FOR COR.~~

- BT'S: 14" PINE N 23 E 120 LKS
- 20" " 81° E 26 LKS.
- 22" " S 26 W 208 LKS.
- 14" " N 15 W 30 LKS.

USDA-FOREST SERVICE

Index  
File No. \_\_\_\_\_

CORNER RECORD (SEARCH)

(Ref. FSM 7151.4)

Tract or  
Survey No. \_\_\_\_\_

Cor.  
No. **2-07**

T 22 S. R. 7 E.

R.D. CRESCENT

County KLAMATH

SA Cor. Sec. 32

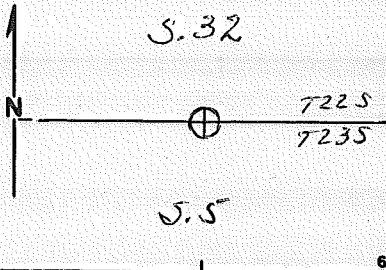
Merid. WILLAMETTE

N.F. DESCHUTES

State OREGON

N/A Cor. Sec. 5

CORNER DIAGRAM<sup>1</sup>



DESCRIBE CORNER MONUMENT FOUND

DESCRIBE BEARING TREES OR OTHER OFFICIAL ACCESSORIES FOUND

PHOTO IDENTIFICATION DATA

Photo No. \_\_\_\_\_  
Filed At. \_\_\_\_\_  
Object Ident. \_\_\_\_\_  
Ident. By \_\_\_\_\_  
*Signature*

PLANE COORDINATE POSITION DATA

State \_\_\_\_\_ Zone \_\_\_\_\_  
X \_\_\_\_\_  
Y \_\_\_\_\_  
Estab. By \_\_\_\_\_  
*Agency*

DESCRIBE CORNER LOCATION RELATIVE TO NEAR-BY FEATURES, ALSO HOW TO REACH CORNER

8" LP BLAZED 2 SIDES  
FS LOCATION POSTER

Signature J. LAWSON

Title \_\_\_\_\_

Division \_\_\_\_\_

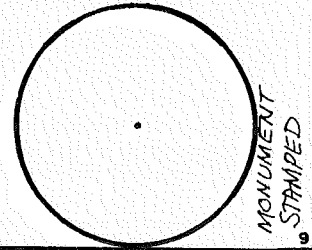
Headquarters \_\_\_\_\_

Date 7/75 D-7100-52 (10/78)



CORNER RECORD (PERPETUATION)

MONUMENT: DESCRIBE NEW MONUMENT SET, OR WORK DONE TO PRESERVE EXISTING MONUMENT



ACCESSORIES DESCRIBE NEW BT'S WITNESS OBJECTS ETC. ESTABLISHED, OR WORK DONE TO PRESERVE EXISTING EVIDENCE

Work Done By \_\_\_\_\_ Title \_\_\_\_\_ Date \_\_\_\_\_ State Registration No. or Agency \_\_\_\_\_ 10

Certified Cor. Record Prepared? Yes No Filed At: \_\_\_\_\_ Date \_\_\_\_\_ 11

REMARKS

Index File No. T. S., R. E., W. M. Tract or Surv. No. Cor. 2-07 12 13

USDA-FOREST SERVICE

Index File No. \_\_\_\_\_

CORNER RECORD (SEARCH)

(Ref. FSM 7151.4)

Tract or Survey No. \_\_\_\_\_

Cor. No. 2-09

T 22 S. R. 7 E.

R.D. CRESCENT

County KLAMATH

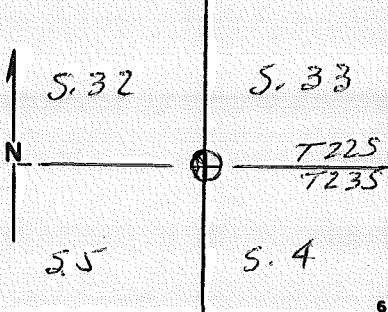
SEC. COR.

Merid. WILLAMETTE

N.F. DESCHUTES

State OREGON

CORNER DIAGRAM



DESCRIBE CORNER MONUMENT FOUND

\_\_\_\_\_

DESCRIBE BEARING TREES OR OTHER OFFICIAL ACCESSORIES FOUND

\_\_\_\_\_

PHOTO IDENTIFICATION DATA

Photo No. \_\_\_\_\_  
 Filed At. \_\_\_\_\_  
 Object Ident. \_\_\_\_\_  
 Ident. By \_\_\_\_\_  
 Signature \_\_\_\_\_

DESCRIBE CORNER LOCATION RELATIVE TO NEAR-BY FEATURES, ALSO HOW TO REACH CORNER

10" LP BLAZED 4 SIDES & PAINTED RED,  
 w/ F.S. LOCATION POSTER

PLANE COORDINATE POSITION DATA

State \_\_\_\_\_ Zone \_\_\_\_\_  
 X \_\_\_\_\_  
 Y \_\_\_\_\_  
 Estab. By \_\_\_\_\_  
 Agency \_\_\_\_\_

Signature J. LAWSON

Title \_\_\_\_\_

Division \_\_\_\_\_

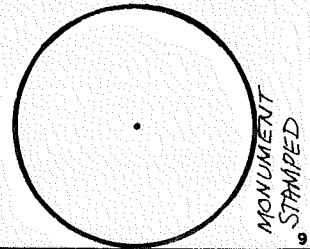
Headquarters \_\_\_\_\_

Date 7/15

D-7100-52 (10/70)

CORNER RECORD (PERPETUATION)

MONUMENT: DESCRIBE NEW MONUMENT SET, OR WORK DONE TO PRESERVE EXISTING MONUMENT



ACCESSORIES DESCRIBE NEW BT'S WITNESS OBJECTS ETC. ESTABLISHED, OR WORK DONE TO PRESERVE EXISTING EVIDENCE

Work Done By \_\_\_\_\_ Title \_\_\_\_\_ Date \_\_\_\_\_ State Registration No. or Agency \_\_\_\_\_ 10

Certified Cor. Record Prepared? Yes No Filed At: \_\_\_\_\_ Date \_\_\_\_\_ 11

REMARKS

Index File No. T. S., R. E., W. M. Tract or Surv. No. Cor. 2-09 12

USDA-FOREST SERVICE

Index

File No. \_\_\_\_\_

CORNER RECORD (SEARCH)

(Ref. FSM 7151.4)

Tract or Survey No. \_\_\_\_\_

Cor. No. 2-13

T 22 S. R. 7 E.

R.D. CRESCENT

County KLAMATH

SEC. COR.

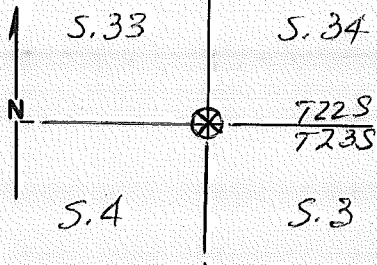
Merid. WILLAMETTE

N.F. DESCHUTES

State OREGON

CORNER DIAGRAM

DESCRIBE CORNER MONUMENT FOUND



DESCRIBE BEARING TREES OR OTHER OFFICIAL ACCESSORIES FOUND

12" LP  
12" LP  
32" PP SNAG

PHOTO IDENTIFICATION DATA

Photo No. \_\_\_\_\_

Filed At. \_\_\_\_\_

Object Ident. \_\_\_\_\_

Ident. By \_\_\_\_\_

Signature

PLANE COORDINATE POSITION DATA

State \_\_\_\_\_ Zone \_\_\_\_\_

X \_\_\_\_\_

Y \_\_\_\_\_

Estab. By \_\_\_\_\_

Agency

DESCRIBE CORNER LOCATION RELATIVE TO NEAR-BY FEATURES, ALSO HOW TO REACH CORNER

SMALL PILE of ROCKS PAINTED RED

Signature J. LAWSON

Title

Division

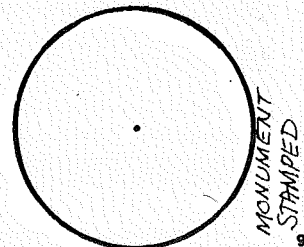
Headquarters

Date 7/75

D-7100-52 (10/70)

CORNER RECORD (PERPETUATION)

MONUMENT: DESCRIBE NEW MONUMENT SET, OR WORK DONE TO PRESERVE EXISTING MONUMENT



ACCESSORIES: DESCRIBE NEW BT'S WITNESS OBJECTS ETC. ESTABLISHED, OR WORK DONE TO PRESERVE EXISTING EVIDENCE

10

Work Done By: \_\_\_\_\_ Title \_\_\_\_\_ Date \_\_\_\_\_ State Registration No. or Agency \_\_\_\_\_

Certified Cor. Record Prepared? Yes No Filed At: \_\_\_\_\_ Date \_\_\_\_\_

11

REMARKS

Index File No.

T.

S., R.

E., W. M.

Tract or Surv. No.

Cor. 2-13

12

13

Index  
File No. \_\_\_\_\_  
CORNER RECORD (SEARCH) (Ref. FSM 7151.4) Tract or Survey No. \_\_\_\_\_ Cor. No. Z-25  
T 22 S. R. 7 E. R.D. CRESCENT County DESCHUTES SEC. COR.  
Merid. WILLAMETTE N.F. DESCHUTES State OREGON

SEE: Z-1

T22S R8E

ET's  
FD

